

Oxford
SCHOOL DISTRICT



Every Day Equity:
Stories from the Field
November 15-17, 2022

Introduction:

Knowing our Strengths and Challenges

- A rated school district
- Number of Students = 4,758
- Number of Schools = 7
- Number of Schools in School Improvement = 3
- Percentage of Students in Poverty = 43%
- Number of Homeless Students = 12
- Number of Foster Care Students = 8
- Number of LEP Students = 347 EL and 100 Monitor Status
- Number of Immigrant Students = 130
- Number of Languages = 32

Strengths

- Centralized Registration Process
- Communication
- Professional Development for Staff
- Teamwork
- Self-reflection
- Honesty

Challenges

- Communication
- Making Technology Available, Functional, Equitable
- Ensuring School Level Staff is "In the know"
- Parent Engagement

McKinney-Vento Homeless

- **Registration-Tie to Homeless**
- **District Services**-Transportation, Child Nutrition, Special Education, Athletics, IT
- **School Services**-PTO, Clothes Closet, Adopt-a-Family, Charger Christmas, Title I Homeless Reservation Funds
- **Community Agencies/Services**- LovePacks, Doors of Hope, Interfaith Compassion Ministries, The Pantry
- **National Resources**- National Association for the Education of Homeless Children and Youth (NAEHCY.org)

Documentation

Foster Care

- Registration- Tie to Foster Care Identification
- Foster Care Network- CPS and Other District POCs
- Important Documents- The BID, Court Orders

Documentation

EL & Immigrant

Title III

- Currently Title III LEP

Parent Communication

- Registration (& communicating with schools about their needs)
- Collaboration with Community Resources (interpreting, teacher prep)
- EL Parent Nights

Staff Communication (professional development)

Program Collaboration (connecting with other programs)

- Early Childhood Education (PreK), CTE, gifted, sped
- Community adult ESL

Curriculum Collaboration (connecting with coaches, teachers, administrators)

- course scheduling, offering (especially for SLIFE or immigrant)
- grading
- co-teaching, co-planning

EL & Immigrant

Parent Communication

Registration Using web-based translated websites for registration, lunch application, and Interpreters and Digital Tools for face-to-face communication.

Inicio de sesión para padres Spanish



Aprende más Contáctenos

Inicio de sesión para padres

Si ya ha creado una cuenta
, inicie sesión en su cuenta para continuar:

Email o teléfono :
Clave :
[Iniciar sesión](#) ¿Olvidó su contraseña? | ¿Olvidaste tu correo electrónico?

o

[Iniciar sesión con Google](#) [Iniciar sesión con Facebook](#)
[Iniciar sesión con LinkedIn](#) [Iniciar sesión con Twitter](#)

Si NO tiene una cuenta
, cree una utilizando el siguiente formulario:

* Nombre del guardián :
* Apellido del tutor :
Número de teléfono :
☐ Habilitar notificaciones de texto SMS

Correo electrónico del tutor :
Confirmar correo electrónico :
Demasiado corto * Clave :
* Confirmar contraseña :
Idioma preferido :
Comunicación preferida :

2022-2023
Oxford School District
Recopilación de datos sobre ingresos del hogar Términos de Privacidad

1 Iniciar 2 Programas 3 Niños 4 Hogar 5 Contacto 6 Resumen 7 Finalizar

[¿Ayuda?](#)

¡Bienvenido a la Encuesta de ingresos familiares!

Antes de empezar...

debe saber algunas cosas

Si recibió una carta de la escuela diciendo que sus hijos fueron automáticamente aprobados (certificados directamente) para comidas gratis para el año escolar 2022-2023 que porque alguien en su hogar participa de los siguientes programas: Supplemental Nutrition Assistance Program (SNAP), Temporary Assistance for Needy Families (TANF), o Food Distribution Program on Indian Reservations (FDPIR); de ser así, no es necesario presentar una solicitud.

Necesitamos solo una solicitud para todos los niños de su hogar que asistan a la escuela en Oxford School District.

La elegibilidad para beneficios de comidas escolares gratuitas o a precio reducido se basa en cualquiera de estas tres cosas:

- el tamaño y los ingresos totales de su hogar en el mes en que se llena la solicitud, o en el mes anterior; o
- el estado individual de su hijo como temporalmente adoptivo, sin hogar, migrante o fugitivo; o
- la participación de algún miembro de su hogar en un programa de asistencia.

Su **ciudadanía o estado migratorio en los EE. UU.** no afecta su elegibilidad para beneficios gratuitos o de precio reducido.

Si tiene alguna pregunta cuando completa la solicitud, haga clic en el icono de signo de interrogación para obtener ayuda con esa sección.

Cosas que necesitará

Por último, hemos compilado una lista de la información que podría necesitar para completar la aplicación. [¡Lea aquí!](#)

☐ Estoy de acuerdo con las [condiciones de uso y política de privacidad](#)

[Siguiente](#)

EL & Immigrant

Parent Communication

Using web-based translated websites for registration, lunch application, and Interpreters and Digital Tools for face-to-face communication.

OXFORD SCHOOL DISTRICT
1637 Highway 30 East • Oxford, Mississippi 38655
Phone: (662) 234-3541 • Fax: (662) 232-2862



Google Translate



Say Hi

Translation Apps

Please scan the QR link to use Google Translate. Please excuse translations errors. Google translate is used to translate this message.

Escanea el enlace QR para usar Google Translate. Disculpen los errores de traducción. El traductor de Google se utiliza para traducir este mensaje.
(Spanish)

من فضلك انظر أخطاء الترجمة. مترجم جوجل يستخدم ترجمة هذه الرسالة. Google لا تستخدم الترجمة من يرجى مسح رابط
(Arabic)

请扫描二维码链接以使用谷歌翻译。请原谅翻译错误。谷歌翻译用于翻译此消息。
(Chinese - Mandarin)

Google 翻訳を使用するには、QR リンクをスキャンしてください。翻訳エラーを許してください。このメッセージの翻訳には Google 翻訳が使用されます。
(Japanese)

Google 번역을 사용하려면 QR 링크를 스캔하세요. 번역 오류를 양해해 주십시오. Google 번역은 이 메시지를 번역하는 데 사용됩니다.
(Korean)

Por favor, digitalize o link QR para usar o Google Tradutor. Por favor, desculpe os erros de tradução. O Google tradutor é usado para traduzir esta mensagem.
(Portuguese)

Пожалуйста, отсканируйте QR-ссылку, чтобы использовать Google Translate. Прошу прощения за ошибки перевода. Google переводчик используется для перевода этого сообщения.
(Russian)

โปรดสแกน QR เพื่อใช้ Google Translate เพื่อแปลข้อความนี้
(Thai)

Vui lòng quét liên kết QR để sử dụng Google Dịch. Xin vui lòng thứ lỗi cho bản dịch. Google dịch được sử dụng để dịch thông báo này.
(Vietnamese)

EL & Immigrant

Parent Communication :EL Parent Night: Using Digital Tools

DE ACUERDO, comience. Hola y bienvenidos a la noche de padres aprendiendo inglés 2021. Mi nombre es Nancy McCurdy y soy



English Learners' Parent Night
October 25, 2021

<https://www.oxfordsd.org/>
and i am the english learner coordinator
for the oxford school district



Microsoft Powerpoint 360, Zoom and YouTube

EL & Immigrant

Staff Communication

Beginning of the Year Professional Development Videos



HELLO TEACHERS & WELCOME BACK!

Introducing....

A short summary of:

ENGLISH LEARNERS PROGRAM



 **OXFORD**
SCHOOL DISTRICT

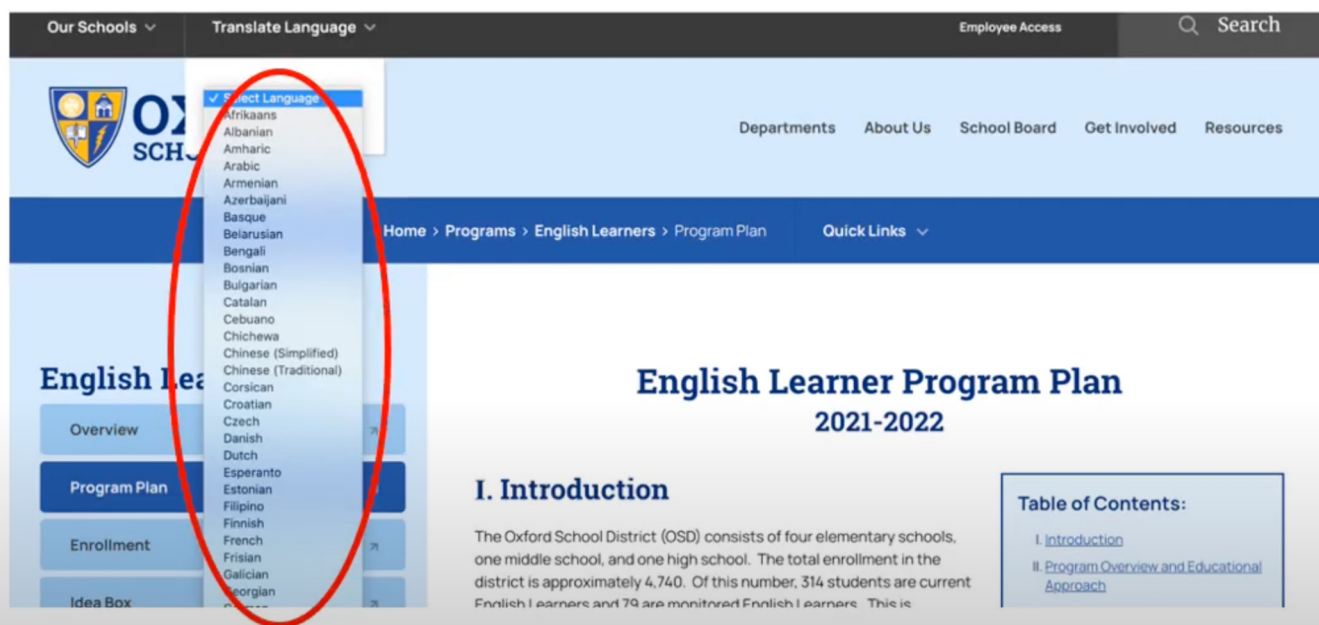
Presented by:
Nancy McCurdy
July, 2022

 **POWTOON**
FOR EDU

EL & Immigrant

Staff Communication
Ongoing Professional Development Videos

EL Program Plan




The screenshot shows the Oxford School District website. The top navigation bar includes 'Our Schools', 'Translate Language', 'Employee Access', and a search bar. The 'Translate Language' dropdown menu is open, showing a list of languages. A red circle highlights this menu. The main content area is titled 'English Learner Program Plan 2021-2022'. It includes a 'Table of Contents' with links to 'I. Introduction' and 'II. Program Overview and Educational Approach'. The 'Introduction' section begins with the text: 'The Oxford School District (OSD) consists of four elementary schools, one middle school, and one high school. The total enrollment in the district is approximately 4,740. Of this number, 314 students are current English Learners and 79 are monitored English Learners. This is'.

<https://www.oxfordsd.org/Page/7942>

EL & Immigrant


Staff Communication

Professional development about the E.L. database with individual teacher meetings to address follow up questions.


Student List
Monitoring

Find

HOME > STUDENTS >



1 of 62
Return to search
Select Student Report

School: Central Elementary
Grade: 1
Language: Arabic
LEP Status: EL Current
HR Teacher:
Monitoring Status:
Date Entered EL:
Date of Birth:

LAS Links (03/01/2021)
Overall: 3 - Intermediate
Listening: 3 - Intermediate
Speaking: 3 - Intermediate
Oral: 2 - Early Intermediate
Reading: 3 - Intermediate
Writing: 3 - Intermediate
Literacy: 3 - Intermediate
Comprehension: 3 - Intermediate
View Test Results

Demographics
Schedule
Test Results
LEP Services and Programs
Accommodations
Modifications
Goals
Monitoring
Notes
Documents

BASIC INFORMATION

Test ID #
Student #
Default School
Central Eleme...
Alternate School
Grade Level
1
Gender
Male

KEY ATTRIBUTES

LEP Teacher
Native Language
Arabic
Home Language
Arabic

EL & Immigrant

Staff Communication:

Professional Development to increase knowledge and instructional skills to service EL Students

"Essentials for Teaching ELs in the K-12 Classroom"

_____ * Module 1: 2nd Language Acquisition Factors & Characteristics

* Module 2: Challenges, Abilities, and Classroom Support



2nd Language Acquisition Factors & Characteristics

1st Language Literacy Skills

- Background Knowledge = Transfer of Skills
- Young ELs - Double the Effort
- Learning Language & Literacy Simultaneously
- 5-7 years if literate in L1
- 8-12 years if NOT literate in L1

OXFORD SCHOOL DISTRICT

POWTOON FOR EDU

Module 1

Language Essentials

01	02	03
2nd Language Acquisition Challenges	2nd Language Acquisition Ability Levels	Classroom Scaffolds & Supports
What to understand	What to expect	What to plan and provide

OXFORD SCHOOL DISTRICT

POWTOON FOR EDU

Module 2

EL & Immigrant

Staff Communication:

Professional development provided to staff regarding state testing requirements for the ELPT..



LAS Links

English Proficiency Test Training

- Test Prep
- Test Scheduling
- Test Documentation
- Test Administration and Test Security

February, 2022



EL & Immigrant

staff communication: Professional Development provided to staff to service EL students with student digital programs.

myLexia | Oxford School District

Search Chat Nancy McCurdy

Reading Resources Manage Archive

Skill Progress Detailed Skills 3rd Grade

View Units By: Activity Date Activity and Date

Core5 Level 15 45% Complete (35 out of 78 Units) Started On: Mar 24, 2020 Last Used: May 1, 2020 As of: Aug 20, 2020

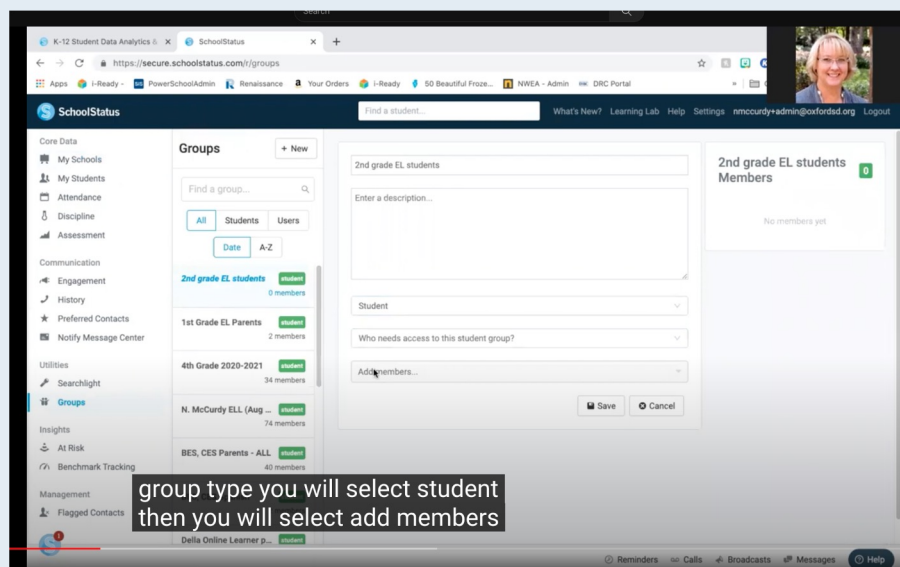
Activity/Unit	Unit Time	Unit Description	Type of Error & WPM	Step Attempts	Standard Instruction	Guided Practice	Direct Instruction
Vocabulary Strategies 1 Total Unit Time: 36:12 Current Unit: 9 out of 16 Total Attempts: 25 Accuracy: Medium Rate: Fast							
1	12:44	Word Construction (Compound Words)		15	■	■	■
2	3:36	Identifying Meaning (Compound Words)		5	■	■	■
3	4:17	Identifying Meaning (Compound Words)		9	■	■	■
4	3:42	Word Construction (semi-, mis-, non-)		1	■	■	■
5	4:15	Identifying Meaning (semi-, mis-, non-)		4	■	■	■
6	1:16	Identifying Meaning (semi-, mis-, non-)		1	■	■	■
7	4:03	Passage Comprehension (Surprise On The Beach)		8	■	■	■
8	2:19	Passage Comprehension (Frogs Around The World)		3	■	■	■
Fluent Reading 1 Total Unit Time: 22:42 Current Unit: 6 out of 10 Total Attempts: 9 Accuracy: Medium Rate: Slow							
1	6:59	Identifying Punctuation (Intonation)		3	■	■	■
2	3:23	Identifying Punctuation (Intonation)		1	■	■	■
3	2:06	Identifying Emphasis (Auditory Stress)		3	■	■	■
4	5:09	Sentence Division (Phrasing)		1	■	■	■
5	5:05	Identifying Rhyme Scheme (Poetry)		5	■	■	■
Academic Vocabulary							
1	5:03	Passage Comprehension (Not Just Any Race)		8	■	■	■
2		Word Meaning (achieve, attempt, challenging, compete, however)		7	■	■	■
3	4:25	Sentence Completion (achieve, attempt, challenging, compete, however)		4	■	■	■

Settings

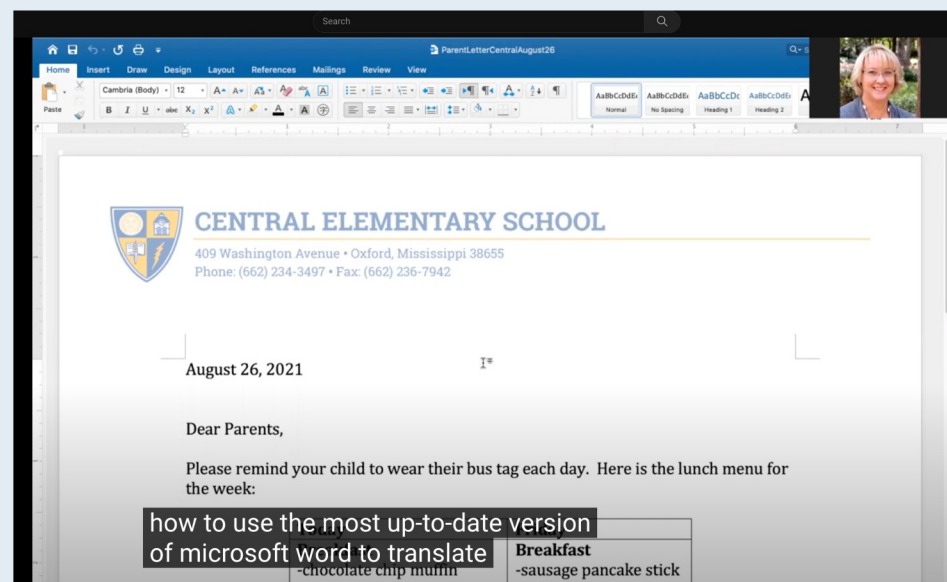
it shows you how many attempts there were

EL & Immigrant

Staff Communication: Professional Development provided to staff to communicate with EL parents using Digital Translation Tools



School Status



Microsoft Word

EL & Immigrant

Program Collaboration: Coordination and collaboration of resources to support ongoing adult ESL classes



L.O.U. Collaboration
PreK parents



First Baptist Church Collaboration
Adult ESL evening/day classes

Presenter Contact Information

- Dr. SuzAnne Liddell
 - Chief of Accreditation and Accountability
 - Director of Federal Programssliddell@oxfordsd.org
- Mary Polk
 - Homeless Liaison and Foster Care Point of Contactmpolk@oxfordsd.org
- Nancy McCurdy
 - E.L. Coordinatornmccurdy@oxfordsd.org