

# MISSISSIPPI MIGRANT EDUCATION SERVICE CENTER

*Educational Services for Migrant Students*



**Presented by:**

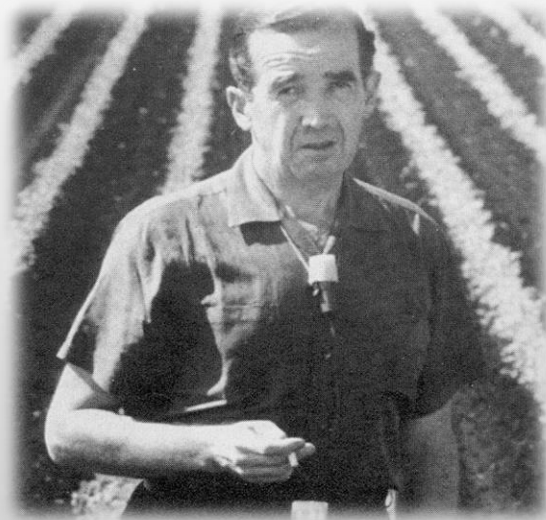
**Gabby Davis, MMESC Director**

**Starsha Jamerson, MMESC Educational Services Coordinator**



In 1960, CBS broadcasted the “Harvest of Shame” documentary

Hosted by legendary journalist,  
Edward R. Murrow



- Oppressive working conditions
- Poverty level wages
- Substandard housing
- Interrupted educational experience
- Impression on the American conscience resulting in the development of the Migrant Education Program (MEP)



## Purposes of the MEP

- Support high-quality and comprehensive education and reduce educational disruption
- Ensure migrant children who move among states are not penalized
- Ensure migrant children are provided with appropriate educational services



## Purposes of the MEP (Cont.)

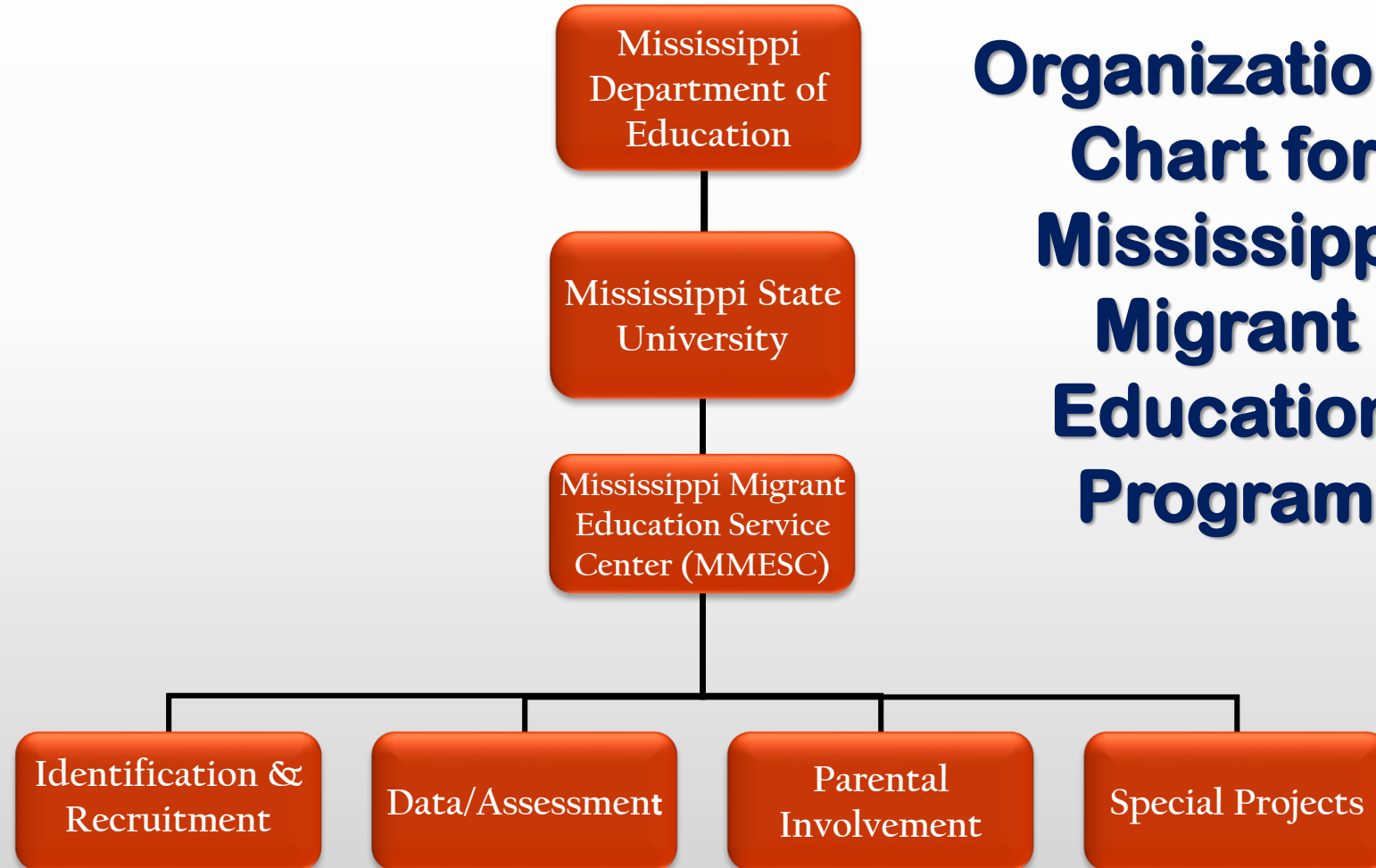
- Ensure migrant children receive full and appropriate academic opportunities
- Design programs to overcome educational disruption, cultural and language barriers, social isolation, health problems, and other issues





# What is the Mississippi Migrant Education Service Center (MMESC)?

- Statewide local operating agency for the Migrant Education Program
- Services all 82 counties, 152 school districts
- Service center to provide all recruitment & service efforts in conjunction with school districts and agencies for migrant children





## Who are Migrant Families?

- **83% Hispanic**
- **10.6% South East Asian**
- **5% Anglo**
- **1% African American**
- **.1% Others**



## Who are Migrant Families?

- Move an average of 2-4 times a year
- 75%-90% of migrant families have combined annual incomes of \$10,000 or less
- Have an average family size of nearly 8 members
- 80%-97% of migrant parents did not graduate from high school
- Parents have a life expectancy of 49 years





## Who are Migrant Families? (Cont.)

- Have an infant mortality rate that is 125% higher than the national rate
- 35% of kindergarten students are one or more years older than their peers
- 45% of second graders are below grade level
- 7<sup>th</sup> & 8<sup>th</sup> grade migrant children begin dropping out at higher rates



## Qualifications for a Child to be Determined Migrant

- Has to be between the ages of 3-21
- Has to have moved across school district lines in the last 36 months
- Works or parents have to work in agriculture
- Cannot have graduated from high school or received a GED



## Process of Identification

Identify migrant children through:

- Schools (Migrant Survey)
- Farms
- Churches
- Stores
- Neighbors
- All sources available



## Process of Recruitment

- Recruiter visits potential family based on school survey information
- Recruiter has a detailed interview with the parent/guardian or the out of school youth to determine eligibility
- Recruiter completes the Certificate of Eligibility (COE)
- ID&R Coordinator reviews COE information and approves or rejects according to eligibility criteria





## **Servicing Migrant Families as part of the MMESC**

- **Provide school supplies throughout the year**
- **Advocate for families**
- **Act as a liaison with the school**
- **Tutoring services**
- **ESL classes**
- **Distribute survival kits to Out-of-School Youth**
- **Parental involvement activities**



## Migrant Education Program/Services

- Provide support in transition to post-secondary or employment
- Assist students in meeting challenging state standards
- Inclusions or referrals to after school programs, summer programs, preschool programs, home-based educational programs
- Home & school visits from migrant recruiters
- Interstate communication – transfer of student records
- Training & technical assistance to LEA's



## Migrant Education Program/Services

- Identify “priority for services” (PFS) students and their needs
- Develop an educational plan for all students
- Implement plan to meet identified needs
- Refer to services from applicable regular school and federal programs
- Support services:
  - Assistance with housing, food, clothing, health care, school supplies, etc.



## Interagency Cooperation & Coordination

- Health Clinics
- Child Care Centers
- Government Agencies
- Churches
- Service Clubs/Civic Organizations
- Rural Legal Aid
- Migrant Councils
- Local Educational Agencies
- Food and Clothing Banks
- Other education programs – Even Start, Head Start, HEP, etc.





## After School Programs

- Research-based, reading and math programs
- After school service providers hired as intermittent workers through MSU
- Snacks, materials, and other resources, such as professional development provided
- Transportation provided by the school district, but mileage cost is reimbursed by the MMESC
- 2 hours daily for 3 days a week
- All provided at no cost to the districts



## After School Programs

- Assist migrant students in connecting language, literature, technology, and life skills to develop English proficiency and achieve higher academic achievement in reading, language, and mathematics
- The program will provide intensive interventions for eligible migrants



# Summer Programs

- Project Based Learning curricular plan
- Tutors hired as intermittent workers through MSU in spring, program begins in June and lasts until the end of the month, (Mon-Thu 8a.m.-12:30p.m.)
- Tutors are trained in the spring
- Transportation provided by the school district, but cost is reimbursed at the culmination of the program
- Breakfast, snacks and lunch is provided if a food program is not available (e.g. USDA summer lunch program)
- All provided at no cost to the district



## Home-based Outreach

- Tutorial services developed for students who have no access to a summer program
- Tutor, migrant recruiter or parental involvement coordinator visits students and provides tutorial services in the home
- Critical needs students are provided with a tablet to use with MobyMax program—A digital educational program that provides differentiated lessons





- The goal of the MMESC is to develop an educational plan for all migrant students and provide quality educational services to ALL migrant students while they are enrolled in the program
- We make an effort to reach all students at school or at home



## Parental Support

- Inform the MMESC recruiter or Parental Involvement Coordinator of parent activities/resources in your district (PTA, Family Resource Centers, parent workshops, Family Nights, etc.)
- Collaborate with Parental Involvement Coordinator to identify helpful community resources
- Distribute MMESC materials to migrant students and parents
- Make sure your student handbook is translated into Spanish



## Supporting the MMESC

- As a Superintendent or Federal Programs Director: Inform your schools about the MEP—Have a district level migrant contact
- As a Principal: Inform your staff about the MEP—Have a migrant contact
- Know the basic qualifications of the MEP
- Follow protocol for identifying migrant children
- Be familiar with the federal statutes that concern migrant children
- Ask about parental occupations when students register at school



## Contact Us

- **Farrah Nicholson – Migrant State Director, MDE**
- **Bryan Lieb – Migrant Coordinator, MDE**
- **Gabby Davis – MMESC Director, MSU**
- **Starsha Jamerson – Projects Coordinator, MSU**
- **Monika Lorinczova – Parental Involvement Coordinator, MSU**
- **Maggie Villarroel – ID&R Coordinator, MSU**
- **Ramona Spencer – Data Coordinator, MSU**
- **Chloe Berry -- Business Coordinator, MSU**
- **Recruiters – Kevin Johnson, Maria Rios, Doris Peacock, Inez Melendez, Wilson Kendrick, MSU**

**[www.mmesc.misstate.edu](http://www.mmesc.misstate.edu)**

**P.O. Box 1575, Mississippi State University**

**Telephone: 662-325-1815, Toll-Free: 1-866-213-9621**