

Special Education Directors Meeting

Quarterly Meeting

February 25, 2019



Dr. Margaret Ellmer

Interim State Director of Special Education

Margaret.ellmer@mdek12.org

Mississippi Department of Education

VISION

To create a world-class educational system that gives students the knowledge and skills to be successful in college and the workforce, and to flourish as parents and citizens

MISSION

To provide leadership through the development of policy and accountability systems so that all students are prepared to compete in the global community



MISSISSIPPI STATE BOARD OF EDUCATION
STRATEGIC PLAN GOALS

1

All
Students
Proficient
and Showing
Growth in All
Assessed
Areas



2

Every
Student
Graduates
from High
School and
is Ready for
College and
Career



3

Every
Child Has
Access
to a High-
Quality Early
Childhood
Program



4

Every
School Has
Effective
Teachers and
Leaders



5

Every
Community
Effectively
Uses a
World-Class
Data System
to Improve
Student
Outcomes



6

Every
School and
District is
Rated "C" or
Higher



Welcome & Introduction

Welcome!

- ReTHINK Special Education in Mississippi
 - Results Based Accountability Initiative
 - FY19 Monitoring
 - IDD Waiver
- Fiscal Updates (FY18 and FY19 Revisions, MCAPS, FY20 Timelines and Process, and Positive Behavior Specialists and Educational Interpreters)
- OSE Reminders & Professional Development



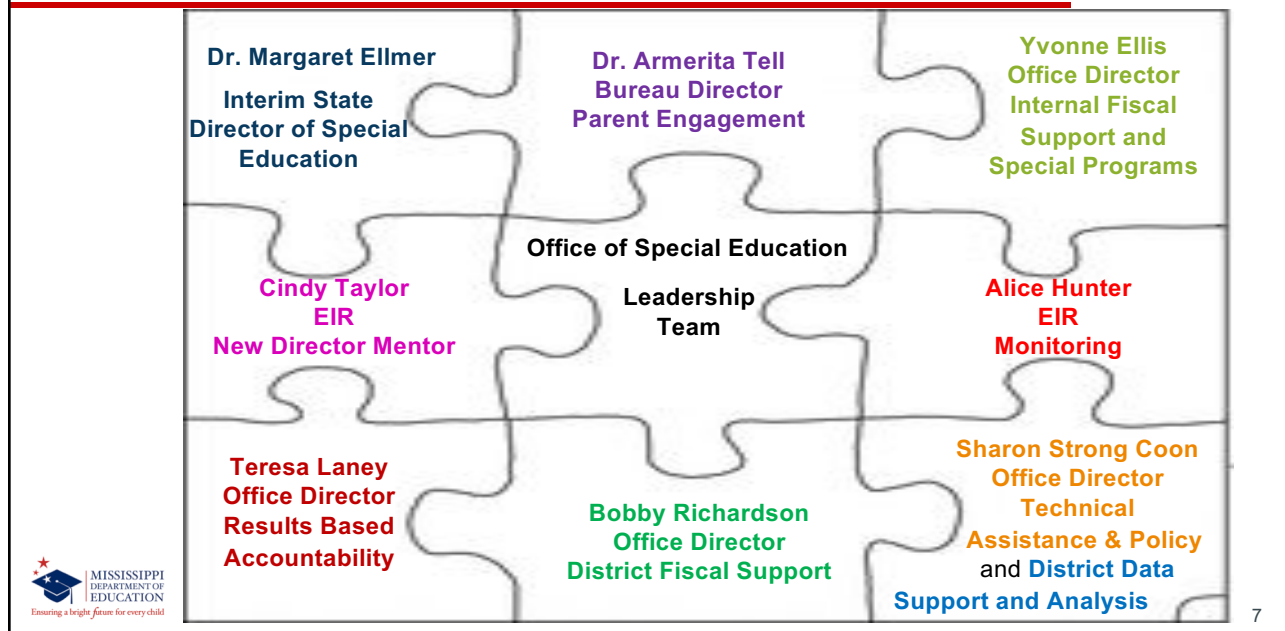
5

Meet the State OSE Team



6

Office of Special Education – Who's Who



Office of Special Education Who's Who

- **Melvinann Carter, Project Officer**
- **Alexis Harris, Project Officer**
- **Raymond Reeves, Project Officer**



Office of Special Education – Who's Who

Parent/Family



Parent Engagement

- Noleen Clark
- Karen Edwards
- Jerrika Gray
- Mona Spells Adou
- (1 Vacant position)

Office of Special Education – Who's Who

Internal Fiscal Support and Special Programs

- Jaecelyn Armstrong
- Janika Cheers
- Roscoe Jones
- (3 Vacant Positions)



Office of Special Education – Who's Who



Technical Assistance and Policy

- Keisha Dixon
- Shuwana Hurt
- Edryce Thompson

Gidget Mansell, SSIP Regional Coach

- Candice Taylor, 619 Coordinator



11

Office of Special Education – Who's Who

District Data Support and Analysis

- Minnia Winters
- Rhonda Douglas
- Gloria Lacey
- (1 Vacant Position)



12

Office of Special Education – Who's Who

Results Based Accountability

- Marilyn Reed
- (2 Vacant Positions)



Office of Special Education – Who's Who

District Fiscal Services

- (3 Vacant Positions)



Office of Special Education – Who's Who

Professional Development Coordinators

- Amy Shelly, Lead PDC
- Jacqueline Thweatt-Burton
 - Christy Hunt
 - Denise Harrison



15

District Contact: Bobby Richardson

Amory School District	Attala County	Booneville	Calhoun County	Canton Public
Choctaw County	Claiborne County	Clarksdale Collegiate	Coahoma County AHS	Coahoma County
Coffeeville	Covington County	Department of Youth Services	East Jasper Consolidated	Enterprise
Franklin County	Greenwood Public	Hazlehurst	Hinds County	Hollandale
Holly Springs	Holmes County Consolidated	Jefferson Davis County	Jones County	Kemper County
Lafayette County	Lamar County	Leake County	Lee County	Lincoln County

16

District Contact: Bobby Richardson

CONTINUED...

Pearl Public	Petal	Picayune	Pontotoc City	Poplarville Separate
Quitman School District	Smith County	South Panola	Tishomingo County	Tupelo Public
Walthall County	West Tallahatchie	Kosciusko	Richton	



17

District Contact: Teresa Laney

Aberdeen	Alcorn	Amite County	Bay St. Louis-Waveland	Biloxi
Chickasaw County	Clarksdale Municipal	Clinton Public	Columbus Municipal	DeSoto County
East Tallahatchie Consolidated	Forest Municipal	Forrest County AHS	George County	Greene County
Greenville Public	Gulfport	Hancock County	Itawamba County	Jackson County
Lawrence County	Long Beach	Lowndes County	Meridian Public	Monroe County
Moss Point Separate	MS School for the Blind	MS School for the Deaf	Newton County	North Bolivar Consolidated
Ocean Springs	Okolona	Pass	Pearl River	Philadelphia

18

District Contacts: Teresa Laney

CONTINUED...

Senatobia Municipal	South Pike	Starkville-Oktibbeha Consolidated	Stone County	Tate County
Tunica County	Water Valley	Webster County	West Bolivar Consolidated	Yazoo City Municipal
Yazoo County	UMC	USM Statewide		



19

District Contact: Sharon Coon

Baldwyn	Benton County	Brookhaven	Carroll County	Cleveland
Columbia	Copiah County	Corinth	Ellisville State School	Forrest County
Grenada	Harrison County	Hattiesburg Public	Houston	Hudspeth Regional Center
Humphreys County	Jackson Public	Jefferson County	Lauderdale County	Laurel
Leflore County	Leland	Louisville Municipal	Madison County	McComb
Midtown	Natchez-Adams	North Panola	North Pike	North Tippah

20

District Contacts: Sharon Coon

CONTINUED...

Union County	Union Public	West Jasper	West Point Consolidated	Western Line
Wilkinson County	Winona-Montgomery Consolidated	Youth Offender Unit	Wayne County	Vicksburg-Warren
Simpson County				



ReTHINK Mississippi

Special Education



Rethink Special Education

- The changes we need won't happen overnight or only through the commitment of a few; but the work is worth it, because at the heart of all our efforts are the individuals we serve and their futures.
- The work is too important, the need is too urgent, and the stakes are too high for us to settle for anything less than whatever it takes to deliver on the promises we have made to children and families in our country.

-Johnny Collett
Assistant Secretary
Office of Special Education and Rehabilitative Services



23

How Do We ReTHINK Special Education in MS?

- **Address** deeply embedded and complex issues
- **Question** systems that do not facilitate the kind of improvement we know is necessary
- **Confront** structures that limit opportunities for individuals with disabilities
- **Change** policies and practices that put the needs of a system over the needs of the individual
- **Challenge** mindsets that appear intent on preserving the status quo



24

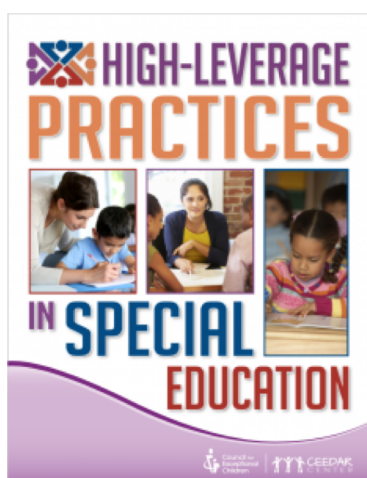
How Do We ReTHINK Special Education in MS?

Here are just a
few of the ways
we are
beginning to
ReTHINK
Special
Education in
Mississippi...



25

CEEDAR High Leverage Practices

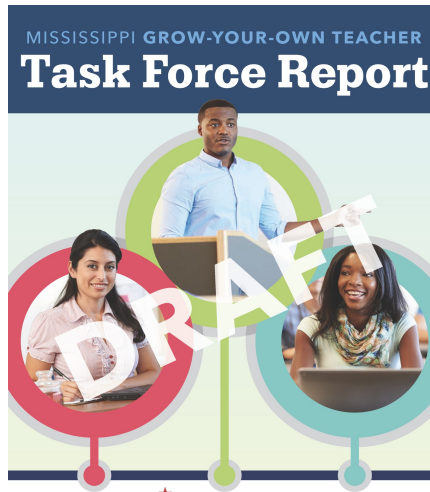


High-leverage practices are centered on a set of effective practices that all teachers need to learn (i.e., practices that are used frequently in classrooms and have been shown to improve student outcomes).



26

Grow Your Own Task Force



Access for All Guide



Fairness doesn't mean giving every child the same thing, it means giving every child what they need.

-Rick Lavoie

Results Driven Accountability



Results Based (Driven) Accountability

- **Principle 1:** *Partnership with stakeholders*
- **Principle 2:** *Transparent and understandable to educators and families*
- **Principle 3:** *Drives improved results*
- **Principle 4:** *Protects children and families*
- **Principle 5:** *Differentiated incentives and supports to states*
- **Principle 6:** *Encourages states to target resources and reduces burden*
- **Principle 7:** *Responsive to needs*



OSERS Framework

OSERS framework

OSERS

To improve early childhood, educational, and employment outcomes and raise expectations for all people with disabilities, their families, their communities, and the nation.



To learn more about Rethink Special Education, visit [OSERS FRAMEWORK](#)



OFFICE OF SPECIAL EDUCATION AND REHABILITATIVE SERVICES
U.S. DEPARTMENT OF EDUCATION

31